

Reception Welcome Meeting Thursday 14th September 2023



Staff

RSJ

Mrs Jones and Mrs O'Brien

RCB

Miss Belcher and Mrs Heeley

RLC

Miss Coley and Miss O'Neill



Key Dates

Monday 18th September: Inset Day

Wednesday 20th September: Reception Mass

Monday 2nd October: Phonics Open Week

Monday 6th November: Inset Day

22nd, 23rd, 24th November: Fine Motor Workshop

Tuesday 28th November: Parent's Evening

Tuesday 12th December: Reception's Christmas Play

Monday 8th January: Inset Day

Key Dates

Monday 29th / Tuesday 30th Jan: Maths Open Morning

Friday 8th March: Mother's Day Picnic

Tuesday 12th March: Parent's Evening

Tuesday 19th March: Easter Bonnet Parade

Wednesday 19th June: EYFS Mass

Wednesday 17th July: Sports Day

Uniform

- Winter Uniform (no polo shirts, shorts or summer dresses)
- No earrings
- No big bows
- Small hair accessories only. They must be blue, black or grey
- No trainers or boots
- Tights to be plain grey or black
- School bags preferred – blue St Bernadette's bag



PE

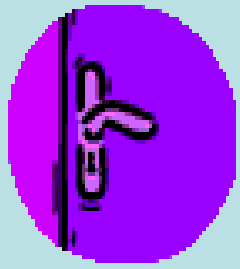
- All items should be labelled.
- PE kit should be kept in school for the half term.
- The children may bring in a tracksuit for outdoor P.E. once the weather becomes cooler.
- Please encourage children to do their own laces and ties.



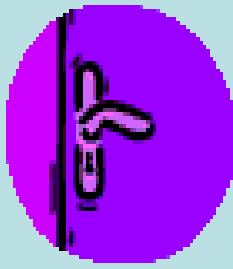
Medical

- Please update medical forms including allergies and asthma if required.
- Please ensure all medicines are up to date (e.g. inhalers)





Morning and Afternoons



- Doors open at 8:30 and close at 8:45am
- Home time doors open at 3:10 and close at 3:20 Friday is 1.55-2:05
- Home time can be a little chaotic at RLC/RCB doors as two classes are being dismissed at once.
- Our main priority is the safety of each child and therefore we do need your co-operation and patience. Please let us know if someone other than yourself will be collecting your child
- Any concerns or messages will be taken at the door and teachers will be available at 3:10
- If you are unable to pick up your child from school, please let the class teacher know or contact the office to advise who will be picking up.



Lunchtime



- Free school meals are now available for children up to Year 2.
- Parents should have completed their menu choice. If you have not please go to the office.
- There will usually be a choice of meat, fish and a baguette/sandwich
- At the start of lunch, each child is given a coloured band which corresponds to the meal choice you have selected.





Lunchtime

- Packed lunches should be healthy options Monday to Thursday. No sweets or chocolate, crisps or fizzy drinks/Nutella
- Friday is a treat day where one treat is permitted in the lunch box.
- You need to inform the office if you wish to change from dinners to lunchbox or vice versa.





Reading



- Children to bring reading bags every day. We will change books once a week. Please keep them safe.
- Please check reading bags for letters/bump notes every night.
- Communication diaries will be used as a form of communication between school and home.
- Children need to learn the sound of each letter initially which helps with word building (we use Read Write Inc)
- The children will be given a word wall.
- A child from each class with bring a story bag home. We ask you to share this with your child. This in turn will help to develop communication and speech and language.



Why is reading important?

- People who read lots attain more. They also develop: general knowledge; vocabulary; a better attitude to writing; higher overall attainment; emotional awareness; a wider understanding of the world and greater expression through speech and writing.
- Children who are weak readers will struggle as much in maths and science at GCSE as they do in English and in arts subjects.



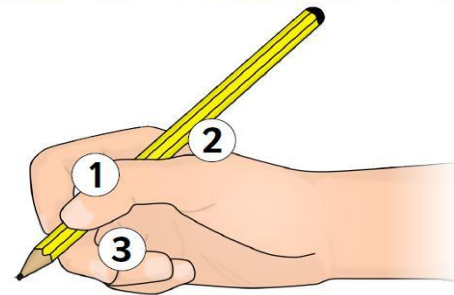
Writing

At this stage of the year we are actively focusing on your child's ability to form all letters correctly. This includes capital letters and lower case letters.

The children should all be able to write their name with the correct capital and lower case letters and their writing should sit on the line.

Please practise this at home with your child, encouraging the correct pencil grip.

How to Hold a Pencil



1. Put your thumb and forefinger just above the cone shaped part of the pencil.
2. Let the pencil rest between your thumb and forefinger.
3. Then put your middle finger underneath for support.

Communication Diaries

- Each child has a reading record, which must be signed at least three times a week.
- Children who have their diary signed at least three times per week will be entered into a termly prize draw.
- Teachers will check diaries weekly.
- If a child does not have their diary in school, they will not be able to receive their reading star for that week.
Children must collect at least ten stars to enter the prize draw.



How can you support?

- Read every day with your child for **at least 15 minutes a day**.
- Encourage your child to read a wide range of reading material - fiction, non-fiction, poetry, newspapers and magazines.
- Use Book of the Month suggestions to help explore a wider range of authors and genres.
- Talk to your child about what they are reading.
- Create a Toppsta profile and enter giveaways to win new books for your child to review – encourage them to share their opinions about what they have read.
- Take them to the library.





Promoting Reading



- The children will have story time daily
- We each have an inviting reading area in our classrooms, encouraging the children to read a range of books including fiction/non-fiction
- We will invite parents in on a Friday morning to share a story with their child (dates to be confirmed)
- We will also be researching famous authors each half term
- Take home books will be changed every Friday. Please share this with your child. It should be an enjoyable experience.



Behaviour Stars



- Every Friday, the children are given the opportunity to reflect on their own behaviour and how well they have demonstrated our behaviour values and expectations – see next slides.
- If they feel they have done a good job with this, they are awarded a star sticker and a stamp in their communication diaries.
- Stars/shields are displayed in every classroom with the behaviour expectations around them.
- Once the children had earned a certain number of stars, they receive their behaviour certificate and then they will receive their behaviour badge for maintaining their excellent behaviour.



Early Years Foundation Stage Curriculum

Throughout the Reception year children work towards the Early Learning Goals. By the end of Reception most children will have achieved ELGs. Those children who are still working towards achieving the ELGs on exit from Reception will continue to do so next year.



Within the theme of Learning and Development
there are seven areas.

The three Prime Areas are:

Personal, Social and Emotional Development

Communication and Language

Physical Development

The specific areas are:

Literacy

Mathematics

Understanding the World

Expressive Arts and Design



Homework

- Every **Friday** your child will be set homework on Seesaw.
- You will be given a login soon. Please complete with your child and submit before the following **Tuesday**.





Trips



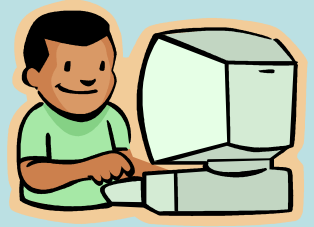
During your child's time in Reception they may have the opportunity to go on a variety of trips to enhance their learning and provide lots of hands on experiences.

To ensure your child goes on all trips it is essential that consent forms are signed/paid for via Parent Pay.





What you can do at home



- Counting to 20 and recognising numbers
- Number and letter formation (we use Nelson font using Read Write Inc Rhymes)
- Recognising and writing own name
- Colouring
- Cutting exercises
- Help your child to dress and undress
- Ensure that your child gets to bed on time and understands the importance of brushing teeth/eating healthy



Saints Days

Each class has a dedicated Saint that they will learn about throughout the year. On their feast day the children can wear their own clothes to school.

RSJ – St Francis– Tuesday 4th October

RCB– St. Joseph – Tuesday 19th March

RSM– St Margaret of Clitherow– Thursday 2nd May

Prayer bag will be given weekly.

Key dates will be available in reading record/school website/Newsletter (emailed every two weeks)



School Website www.stberns.co.uk



St. Bernadette's Catholic Primary School

Miss Angela Cowings - Hob Moor Road, Yardley, Birmingham, B25 8QL
T: 0121 783 7232 F: 0121 789 8306 enquiry@stberns.bham.sch.uk

Home

Our School

Curriculum

Parents

Catholic Life

Blog

Contact Us



Prospectus



Email



Newsletters

Upcoming events

School Twitter @StBernsPrimary

Home Moments

Search Twitter



Have an account? [Log in](#)



Tweets 5,373 Following 298 Followers 1,270 Likes 2,706

Follow

St. Bernadette's

@StBernsPrimary

Learn to love, love to learn.

Yardley, Birmingham

Tweets Tweets & replies Media

Pinned Tweet



St. Bernadette's @StBernsPrimary · 18 Dec 2017

When using our school Twitter page, please remember to follow guidelines as outlined in St. Bernadette's Online Safety Policy. We expect users to be polite, respectful and courteous at all times.

New to Twitter?

Sign up now to get your own personalized timeline!

Sign up

Thank-you

A big thank you for all of your help and support.

